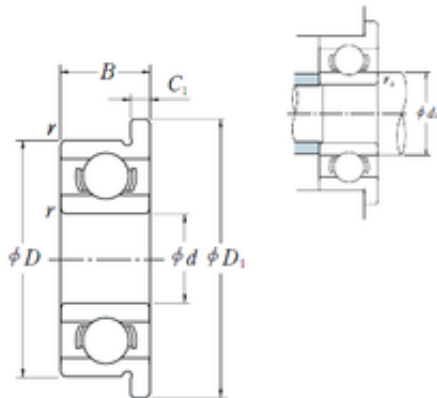




JieFei Bearing Co., Ltd

2 mm x 7 mm x 2,5 mm ISO MF72 deep groove ball bearings



Bearing No. MF72

Size	2x7x2.5 mm
Bore Diameter	2 mm
Outer Diameter	7 mm
Width	2,5 mm
d	2 mm
D	7 mm
D1	8,2 mm
B	2,5 mm
r min.	0,15 mm
C1	0,6 mm

MF72 Bearing 2D drawings and 3D CAD models