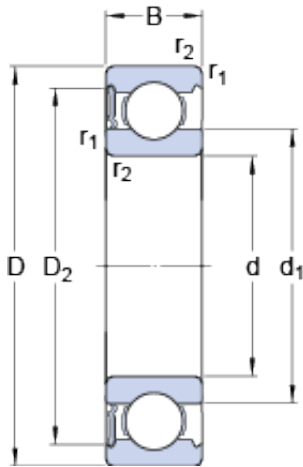




# JieFei Bearing Co., Ltd



100 mm x 150 mm x 24 mm SKF 6020-RS1 deep groove ball bearings

Bearing No. 6020-RS1

6020-RS1 Bearing 2D drawings and 3D CAD models

Size	150x100x24 mm
Bore Diameter	150 mm
Outer Diameter	100 mm
Width	24 mm
d	100 mm
D	150 mm
B	24 mm
d <sub>1</sub>	115,95 mm
D <sub>2</sub>	138,3 mm
r <sub>1,2</sub> - min.	1,5 mm
d <sub>a</sub> - min.	107 mm
d <sub>a</sub> - max.	115,9 mm
D <sub>a</sub> - max.	143 mm
r <sub>a</sub> - max.	1,5 mm
Basic dynamic load rating - C	63,7 kN
Basic static load rating - C <sub>0</sub>	54 kN
Fatigue load limit - P <sub>u</sub>	2 kN
Limiting speed	2600 r/min
Calculation factor - k <sub>r</sub>	0,025
Calculation factor - f <sub>0</sub>	15,9
Category	Single Row Ball Bearings
Inventory	0.0
Manufacturer Name	SKF
Minimum Buy Quantity	N/A



## JieFei Bearing Co., Ltd

Weight / Kilogram	1.272
Product Group	B00308
Enclosure	1 Seal
Precision Class	ABEC 1   ISO P0
Maximum Capacity / Filling Slot	No
Rolling Element	Ball Bearing
Snap Ring	No
Internal Special Features	No
Cage Material	Steel
Enclosure Type	Contact Seal
Internal Clearance	C0-Medium
Inch - Metric	Metric
Long Description	100MM Bore; 150MM Outside Diameter; 24MM Outer Race Width; 1 Seal; Ball Bearing; ABEC 1   ISO P0; No Filling Slot; No Snap Ring; No Internal Special Features; C0-Medium Internal Clearance; Steel Cage;
Other Features	Deep Groove   NBR Seal
Category	Single Row Ball Bearing
UNSPSC	31171504
Harmonized Tariff Code	8482.10.50.68
Noun	Bearing
Keyword String	Ball
Manufacturer URL	<a href="http://www.skf.com">http://www.skf.com</a>
Weight / LBS	2.8878
Outside Diameter	5.906 Inch   150 Millimeter
Outer Race Width	0.945 Inch   24 Millimeter
Inner Race Width	0 Inch   0 Millimeter
Bore	3.937 Inch   100 Millimeter
d <sub>1</sub>	115.95 mm



## JieFei Bearing Co., Ltd

$D_2$	138.3 mm
$r_{1,2}$ min.	1.5 mm
$d_a$ min.	107 mm
$d_a$ max.	115.9 mm
$D_a$ max.	143 mm
$r_a$ max.	1.5 mm
Basic dynamic load rating C	63.7 kN
Basic static load rating $C_0$	54 kN
Fatigue load limit $P_u$	2.04 kN
Calculation factor $k_r$	0.025
Calculation factor $f_0$	15.9
Mass bearing	1.27 kg